

# KOH 40-R High Power Fixture Guide

Indoor | Recessed | Output up to 2150lm

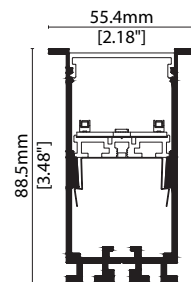


## Key applications

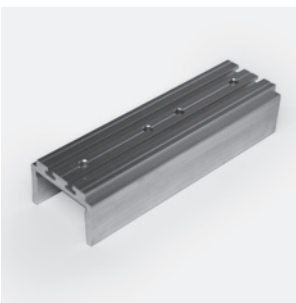
- ✓ Ceiling
- ✓ Office lighting
- ✓ Downlighting
- ✓ Wall grazing
- ✓ Interior

## Key features

- ✓ Control Gear
- ✓ Extensive CCT range
- ✓ Custom lengths
- ✓ High lumen efficacy
- ✓ Decorative
- ✓ IP40
- ✓ Diffusion: Homogenous
- ✓ Lensed
- ✓ Direct view



## MOUNTING METHODS



KKTJ-03 Joining bar



KKBK-19 Fixing bracket

# KOH 40-R High Power

## Specification sheet

# KKDC



<b>Dimensions</b>	H88.5/W55.4/L584-1704mm (H3.48/W2.18/L22.99-67.09in)
<b>PCB Cut-point</b>	560/1120/1680mm (22.05/44.09/66.14in)
<b>LED Pitch</b>	-
<b>Chip</b>	<b>h-line CREE/Lumileds</b>
<b>Cover/Optics</b>	Louvre + (Frosted Cover/10°/20°/30°/Spread Lens)
<b>CCT</b>	<b>h-line</b> : 2200K/2700K/3000K/3500K/4000K/5000K
<b>LED binning</b>	<b>h-line</b> : 3-step MacAdam Ellipse (4-step @5000K)
<b>CRI</b>	$\geq 90$ (2700K/3000K) $\geq 80$ (2200K/3500K/4000K) $\geq 75$ (5000K)
<b>Lifetime</b>	50,000 hours @ 25°C (50,000 hours @ 77°F)
<b>Operating temp</b>	$T_a = -20$ to 45°C ( $T_c$ max = 62.9°C) $T_a = -4$ to 113°F ( $T_c$ max = 145.2°F)
<b>IP Rating</b>	IP40
<b>Finish</b>	Matt Silver/Grey/White/Black/Bronze Powder Coated
<b>Mounting</b>	Recessed mounting via bracket
<b>Power feed</b>	Male/female connectors
<b>Control</b>	0-10V/DALI (Integrated Power Supply)



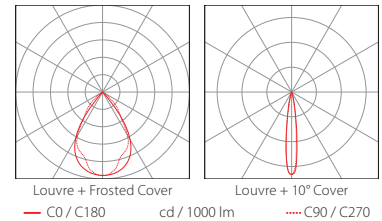
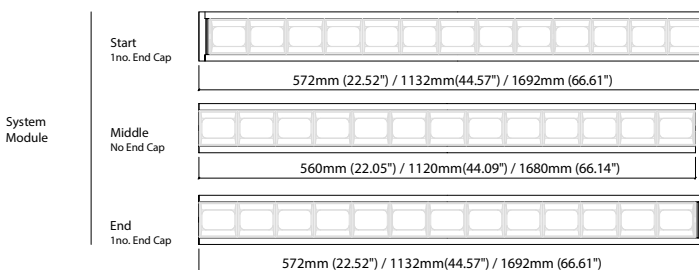
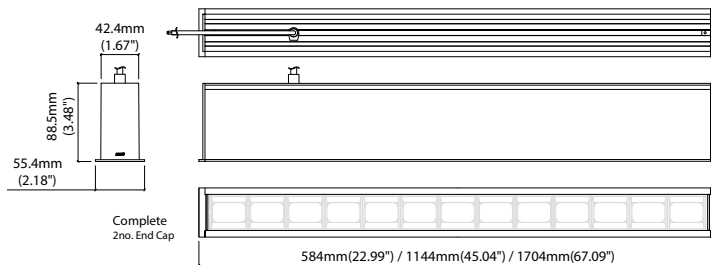
### LED Grading Key

#### Exclusive Grade

<b>h-line*</b>	*KKDC tuned
Constant Voltage Lensed High Power LED	CCT range
3-step CCT range (4-step for 5000K)	

<b>Power consumption</b>	<b>Supply voltage</b>	<b>Supply current</b>	<b>Power factor:</b>
33.5W	240V AC 50Hz	0.14A	0.95 @ 239.99V, 50Hz

	<b>Louvre + Frosted Cover</b>	<b>Louvre + 10° Lens</b>	<b>Louvre + 20° Lens</b>	<b>Louvre + 30° Lens</b>	<b>Louvre + Spread Lens</b>	<b>CRI</b>	<b>R9</b>	<b>Rf</b>	<b>Rg</b>
<b>h-line</b>	870lm 27lm/W	2190lm 65.2lm/W	2150lm 64.1lm/W	1890lm 56.4lm/W	810lm 24.1lm/W	94	74	92	102



Data derived from independent UKAS/IESNA LM-79-08 accredited testing of production samples.

# KOH 40-R High Power

## Code Table



### FIXTURE

Model	Finish	Cover	Grade	LED Type <sup>1</sup>	Colour (CCT)	Length Availability <sup>2</sup>	Lens	Module Type*	Control Type	Input
KOH 40-R	Matt White Paint	MW	h	High Power	2200K <sup>4</sup>	580mm	Frosted lens	Complete	0-10V	AC 100V
	Matt Silver Paint	MS			2700K <sup>3</sup>	1140mm	10°	Start	DALI	AC 220-240V
	Matt Grey Paint	MG			3000K <sup>3</sup>	1700mm	20°	Middle	No Controller	No PSU
	Matt Black Paint	MB			3500K <sup>4</sup>	22.05in	30°	End		
	Bronze Paint	BP			4000K <sup>4</sup>	44.09in	Spread lens			
					5000K <sup>5</sup>	66.14in				

<sup>1</sup> Refer to **LED Grading Key** on **Specification sheet** page

<sup>2</sup> Refer to **Length Availability List** or enter total run length instead of length code

<sup>3</sup> 2700K/3000K – 90CRI

<sup>4</sup> 2200K/3500K/4000K – 80CRI

<sup>5</sup> 5000K – 75CRI

\* Module Type (various fixture lengths)

Complete	FE	
Start	LE	
Middle	XE	
End	RE	

### Code Example:

GB	-	MW	-	T	-	h	-	957A	-	30	-	m	-	1140	-	30	-	FE	-	4	-	d
KOH 40-R		Matt White Paint		Louvre		h		High Power		3000K		1140mm		30°		Complete		0-10V		AC 220-240V		

### ACCESSORIES

#### Mounting Accessories

KKJT-03	Joining Bar
KKBK-19	Fixing bracket

\* Refer to **Mounting accessories** on **Accessories** pages

#### Connection Accessories

KKCN-26	Power Feed Cable
KKCN-31	Power Feed Cable (Non-Fabric)

\* Refer to **Power feed** on **Accessories** pages

#### PSU/Driver

0-10V/DALI (Integrated Power Supply)

Colour	LED	Lumen/module	Wattage	Spec Doc	Length
Single CCT	630A	1170/module	17.5	KOH 40-R High CRI	560/1120/1680mm (22.05/44.10/66.14in)
	957A	2190/module	33.5	KOH 40-R High Power	560/1120/1680mm (22.05/44.10/66.14in)

\* Performance data: h-line, louvre + 10° lens, 3000K, 580mm module

# KOH 40-R High Power Length Availability List

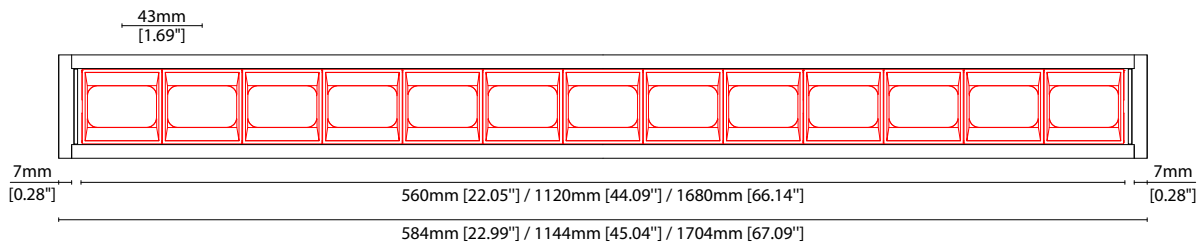


Length Code		Fixture Length <sup>1</sup>		LED Strip <sup>2</sup>		End Cap Dimension <sup>3</sup>		Wattage (W)	Output (lm)
Metric	Imperial(US)	Metric	Imperial(US)	Metric	Imperial(US)	Metric	Imperial(US)		3000K (Test Data)
m0584	i0023	584mm	22.99in	560mm	22.05in	14mm	0.55in	33.50	2184
m1144	i0045	1144mm	45.04in	1120mm	44.09in	14mm	0.55in	67.00	4368
m1704	i0067	1704mm	67.09in	1680mm	66.14in	14mm	0.55in	100.50	6553

<sup>1</sup> Actual total overall length of light fixture (LED strip + end caps + void/wire hole)

<sup>2</sup> Actual length of PCB strip

<sup>3</sup> Actual length of 2x end caps



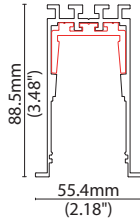
### MOUNTING ACCESSORIES

Note: Accessories are to be ordered separately with corresponding code shown below.



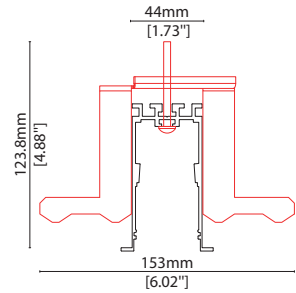
**KKJT-03**

Joining bar  
(allow 1 per join)  
L120/W38.3/H26.3mm  
(L4.72/W1.50/H1.03")



**KKBK-19**

Fixing bracket  
(allow 2 per metre/40in)  
S/Steel finish  
L50/W153/H118mm  
(L1.97/W6.02/H4.65")



### POWER CABLE



**KKCN-26**

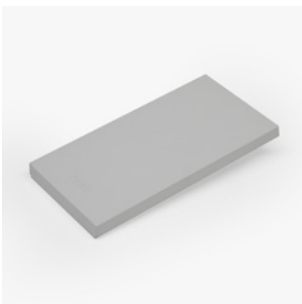
Power Feed Cable



**KKCN-31**

Power Feed Cable (Non-Fabric)

### END CAPS AND LIGHT LEAK TAPE



- KKEC-S1 (2no.) - End cap pair (Mat white)
- KKEC-S2 (2no.) - End cap pair (Mat silver)
- KKEC-S3 (2no.) - End cap pair (Mat gray)
- KKEC-S4 (2no.) - End cap pair (Mat black)
- KKEC-S5 (2no.) - End cap pair (Bronze)



**Black tape** (prevents light leak)